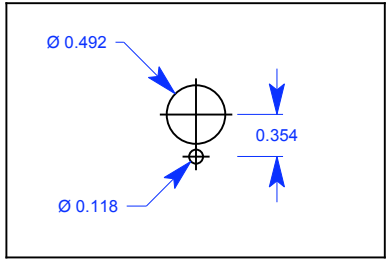
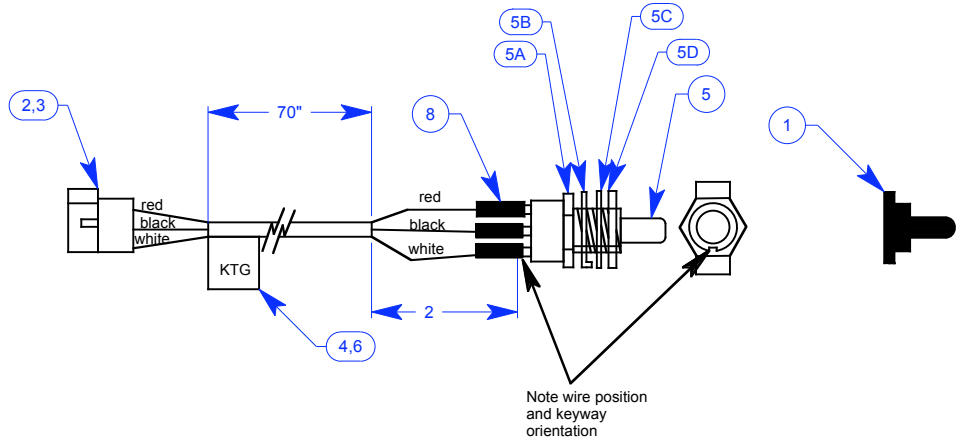


A B C D E F G H J K L M N P

Rev	Description	By	Date
0	Release	--	MM/DD/YY



PANEL CUTOUT

Item	Part #	Rev	Qty	Unit	Description
8	30034	0	3	in	Heat shrink, 1/8" 3 @ 1" ea.
7	90020	0	72	in	cable, three conductor, 22 AWG, black
6	85925	0	1	ea	Label, s/n and p/n
5D			1	ea	Hex face nut
5C			1	ea	lockwasher
5B			1	ea	Locking ring
5A			1	ea	Hex backup nut
5	75077	0	1	ea	Switch, SPDT, (ON)-Off-(ON)
4	60049	0	1	ea	label, overlaminating, 1.25 x 3
3	40100	0	1	ea	Plug, 3 circuit, 0.062"
2	40025	0	3	ea	Contact, pin, 18-24AWG, 0.062"
1	30099	0	1	ea	Boot seal, black, 12mm

THIS DRAWING IS THE PROPERTY OF THE KENNEDY TECHNOLOGY GROUP, ROSE HILL, KANSAS

Kennedy Technology

AuxAmp, Up/Down Switch,
Panel Mount

UNLESS OTHERWISE SPECIFIED:
DIMENSIONS ARE IN INCHES
TOLERANCES
LINEAR
Fractional - 1/32"
0.0 ± 0.15
0.00 ± 0.015
0.000 ± 0.0015
ANGULAR
± 0.5 DEG.

REFERENCE XXXXXX	CADFILE	DWG NO. 95481	REV NO. 0
SIZE B	SCALE: NONE		FOR ASSISTANCE CONTACT: vox 316-776-1111 fax 316-776-9035
SHEET 1 OF 1		CHECKED	DATE

A B C D E F G H J K L M N P