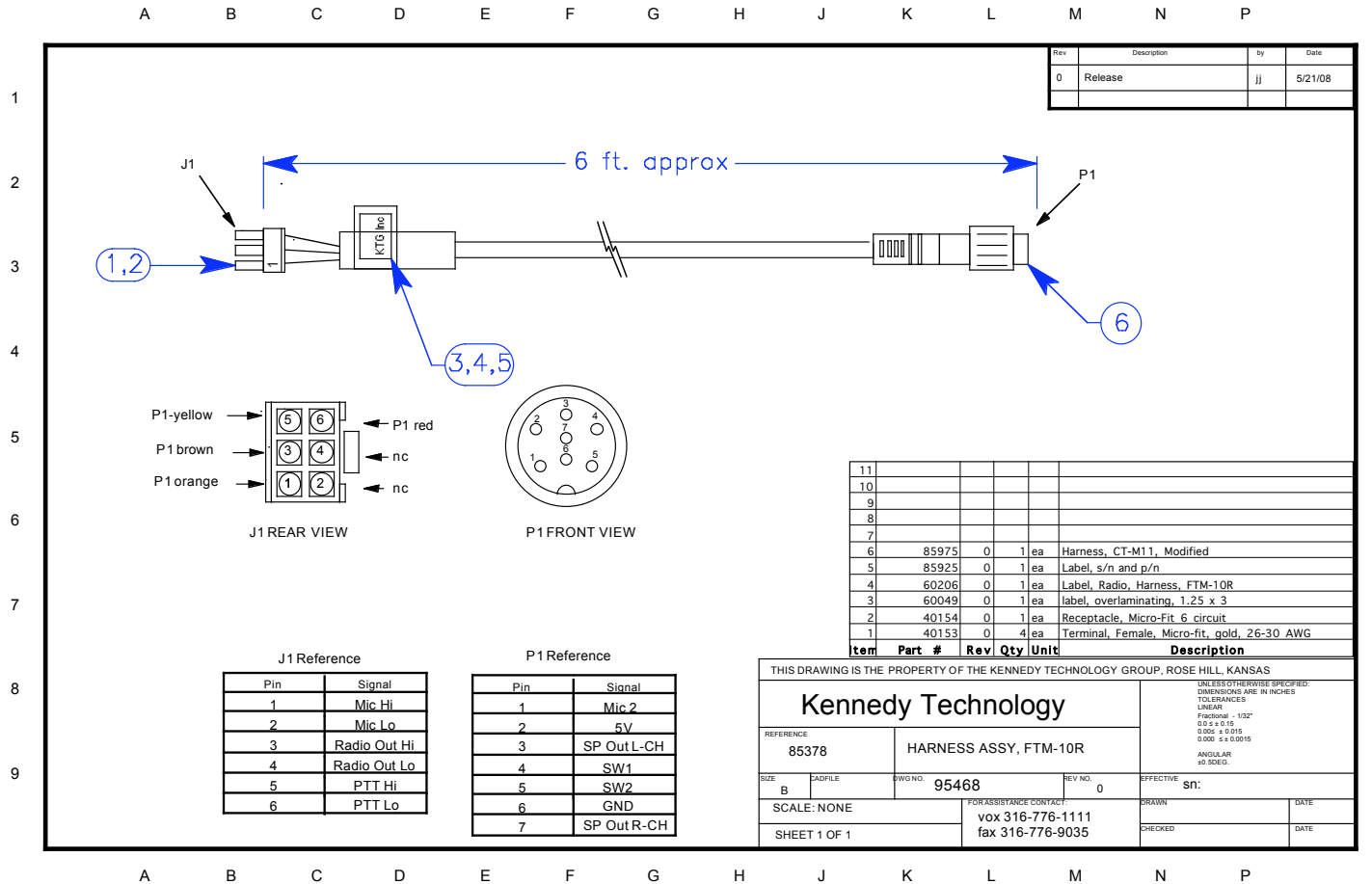
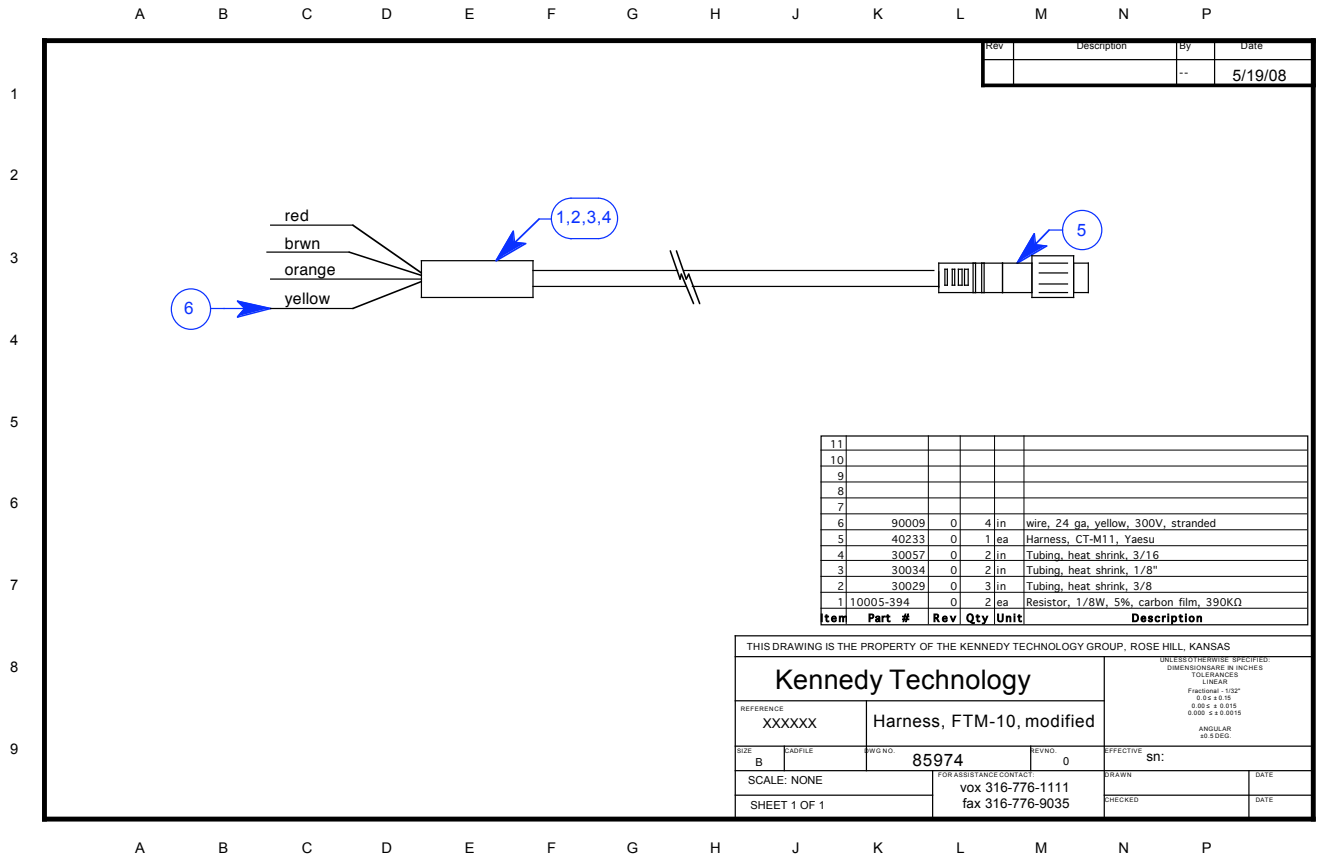


The first drawing is the harness.



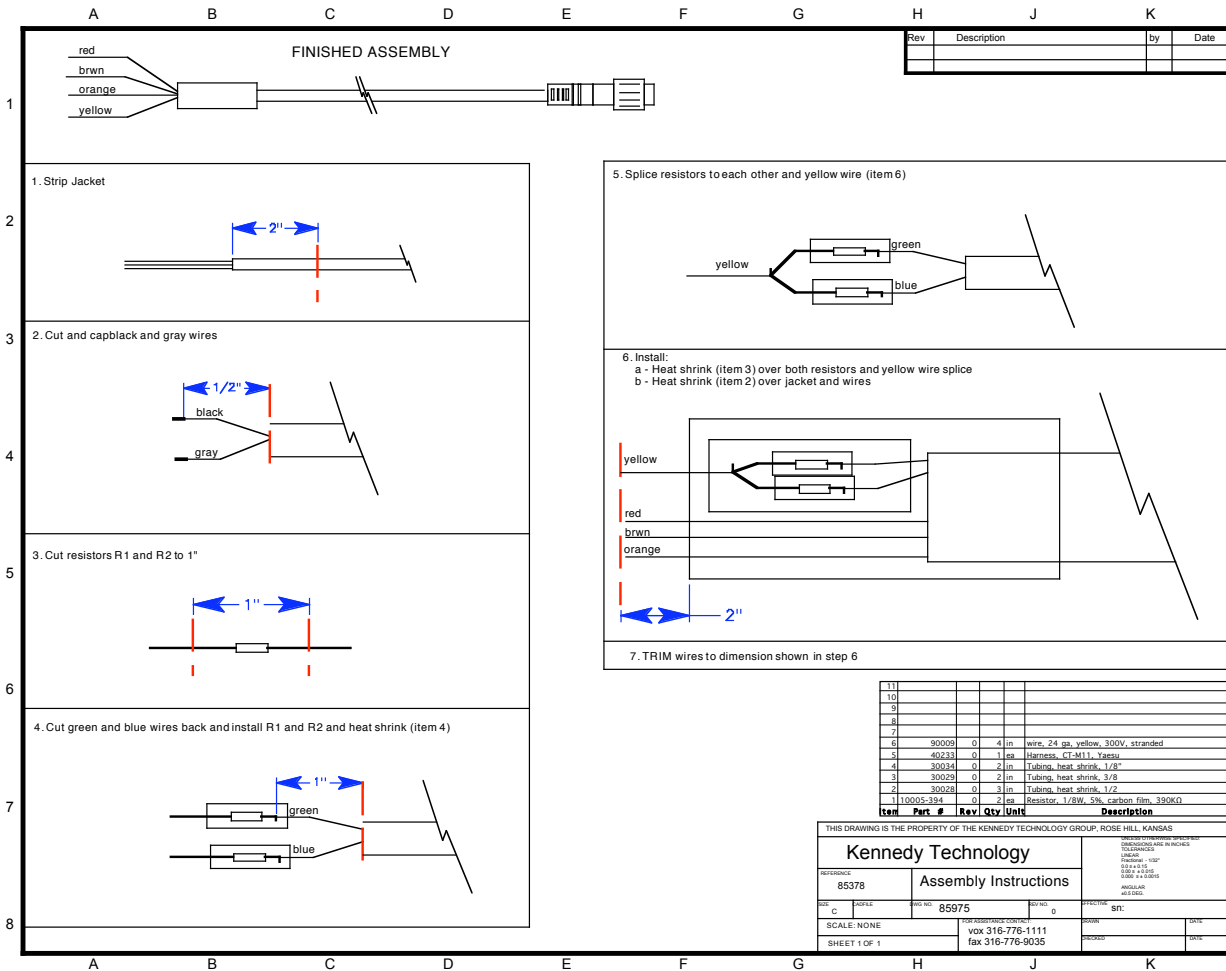
This drawing is the property of Kennedy Technology Group, Inc. Information contained herein is not to be disclosed or used for commercial purposes without the expressed permission of said owner.

Here is item 6 in the drawing above;



This drawing is the property of Kennedy Technology Group, Inc. Information contained herein is not to be disclosed or used for commercial purposes without the expressed permission of said owner.

here is the modification procedure for the harness;



This drawing is the property of Kennedy Technology Group, Inc. Information contained herein is not to be disclosed or used for commercial purposes without the expressed permission of said owner.

Here is the pigtail to which the modified harness is connected.

Rev.	Description	by	Date
0	Release	jj	07/13/2008

Item	Part #	Rev	Qty	Unit	Description
11	90014	0	8	in	wire, 24 ga, white, 300V, stranded
10	90011	0	8	in	wire, 24 ga, blue, 300V, stranded
9	90010	0	8	in	wire, 24 ga, green, 300V, stranded
8	90009	0	8	in	wire, 24 ga, yellow, 300V, stranded
7	90008	0	8	in	wire, 24 ga, orange, 300V, stranded
6	90007	0	8	in	wire, 24 ga, red, 300V, stranded
5	85925	0	1	ea	Label, s/n and p/n
4	60049	0	1	ea	label, overlaminating, 1.25 x 3
3	40154	0	1	ea	Receptacle, Micro-Fit 6 circuit
2	40118	0	6	ea	Terminal, Female, Micro-fit, gold, 20-24 AWG
1	30057	0	3	in	Tubing, heat shrink, 3/16

**J1 Reference**

Pin	Signal
1	Mic Hi
2	Mic Lo
3	Radio Out Hi
4	Radio Out Lo
5	PTT Hi
6	PTT Lo

THIS DRAWING IS THE PROPERTY OF THE KENNEDY TECHNOLOGY GROUP, ROSE HILL, KANSAS			
<h2 style="margin: 0;">Kennedy Technology</h2>		UNLESS OTHERWISE SPECIFIED: DIMENSIONS ARE IN INCHES TOLERANCES LINEAR Fractional - 1/32" 0.0 ± 0.15 0.005 ± 0.015 0.000 ± 0.0015 ANGULAR ±0.5DEG.	
REFERENCE	Harness, Radio, Pigtail		
<b>95314</b>			
SIZE	CAD FILE	DWG NO.	REV NO.
A		<b>95479</b>	0
SCALE: NONE		FOR ASSISTANCE CONTACT:	EFFECTIVE
SHEET 1 OF 1		vox 316-776.1111 fax 316-776.9035	sn:
		CHECKED	DATE
		DESIGN	DATE

This drawing is the property of Kennedy Technology Group, Inc. Information contained herein is not to be disclosed or used for commercial purposes without the expressed permission of said owner.

For Harley FRSet-SingleSet, 95294, set SW1, 1 to 4 “ON”

## User Sheet Supplement

Radio Harness, FTM-10R, pn 95468

Document PN: 65388R0

Set the FRSet's Internal Switches 3 through 7 as show  
the figure below. For Switches 1,2, and 8, refer to the FI  
User Sheet

1 2 3 4 5 6 7 8

