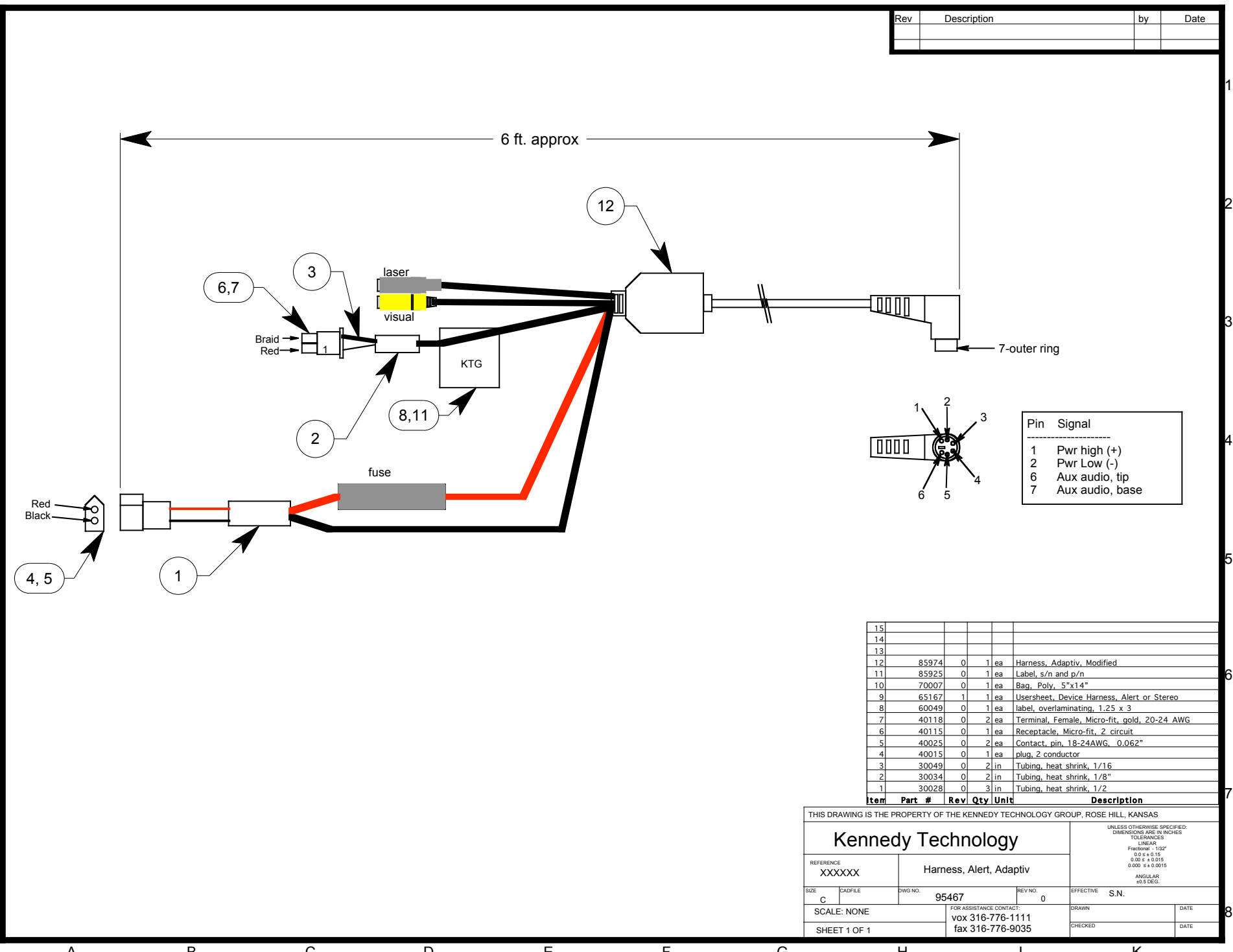


Rev	Description	by	Date



Pin	Signal
1	Pwr high (+)
2	Pwr Low (-)
6	Aux audio, tip
7	Aux audio, base

Item	Part #	Rev	Qty	Unit	Description
15					
14					
13					
12	85974	0	1	ea	Harness, Adaptiv, Modified
11	85925	0	1	ea	Label, s/n and p/n
10	70007	0	1	ea	Bag, Poly, 5"x14"
9	65167	1	1	ea	Usersheet, Device Harness, Alert or Stereo
8	60049	0	1	ea	label, overlaminating, 1.25 x 3
7	40118	0	2	ea	Terminal, Female, Micro-fit, gold, 20-24 AWG
6	40115	0	1	ea	Receptacle, Micro-fit, 2 circuit
5	40025	0	2	ea	Contact, pin, 18-24AWG, 0.062"
4	40015	0	1	ea	plug, 2 conductor
3	30049	0	2	in	Tubing, heat shrink, 1/16
2	30034	0	2	in	Tubing, heat shrink, 1/8"
1	30028	0	3	in	Tubing, heat shrink, 1/2"

THIS DRAWING IS THE PROPERTY OF THE KENNEDY TECHNOLOGY GROUP, ROSE HILL, KANSAS

## Kennedy Technology

REFERENCE: XXXXXX      Harness, Alert, Adaptiv

UNLESS OTHERWISE SPECIFIED:  
DIMENSIONS ARE IN INCHES  
TOLERANCES:  
LINEAR  
Fractional = 1/32"  
0.0 ± 0.15  
0.05 ± 0.015  
0.000 ± 0.0015  
ANGULAR  
±0.5 DEG.

SIZE: C	CADFILE:	DWG NO.: 95467	REV NO.: 0	EFFECTIVE DATE: S.N.
SCALE: NONE		FOR ASSISTANCE CONTACT: vox 316-776-1111 fax 316-776-9035		DRAWN:      DATE:
SHEET 1 OF 1				CHECKED:      DATE: