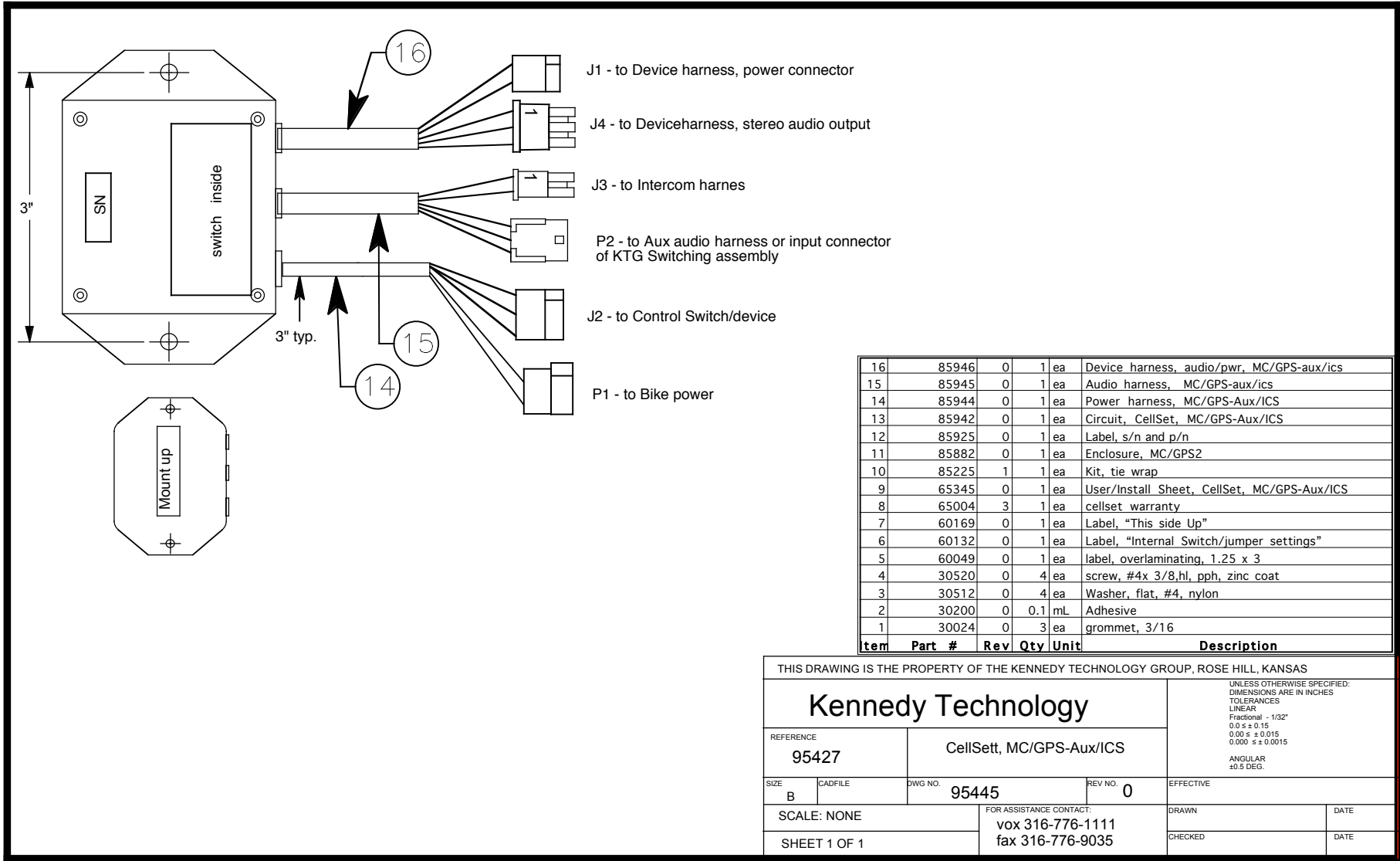


A B C D E F G H J K L M N P

1
2
3
4
5
6
7
8
9

1
2
3
4
5
6
7
8
9



Item	Part #	Rev	Qty	Unit	Description
16	85946	0	1	ea	Device harness, audio/pwr, MC/GPS-aux/ics
15	85945	0	1	ea	Audio harness, MC/GPS-aux/ics
14	85944	0	1	ea	Power harness, MC/GPS-Aux/ICS
13	85942	0	1	ea	Circuit, CellSet, MC/GPS-Aux/ICS
12	85925	0	1	ea	Label, s/n and p/n
11	85882	0	1	ea	Enclosure, MC/GPS2
10	85225	1	1	ea	Kit, tie wrap
9	65345	0	1	ea	User/Install Sheet, CellSet, MC/GPS-Aux/ICS
8	65004	3	1	ea	cellset warranty
7	60169	0	1	ea	Label, "This side Up"
6	60132	0	1	ea	Label, "Internal Switch/jumper settings"
5	60049	0	1	ea	label, overlaminating, 1.25 x 3
4	30520	0	4	ea	screw, #4x 3/8,hl, pph, zinc coat
3	30512	0	4	ea	Washer, flat, #4, nylon
2	30200	0	0.1	mL	Adhesive
1	30024	0	3	ea	grommet, 3/16

THIS DRAWING IS THE PROPERTY OF THE KENNEDY TECHNOLOGY GROUP, ROSE HILL, KANSAS					
<h1>Kennedy Technology</h1>				UNLESS OTHERWISE SPECIFIED: DIMENSIONS ARE IN INCHES TOLERANCES: LINEAR Fractional - 1/32" 0.015 ± 0.015 0.005 ± 0.015 0.0005 ± 0.0015 ANGULAR ±0.5 DEG.	
REFERENCE	CellSet, MC/GPS-Aux/ICS				
95427					
SIZE	CADFILE	DWG NO.	95445	REV NO.	0
B					EFFECTIVE
SCALE: NONE			FOR ASSISTANCE CONTACT:		DRAWN
			vox 316-776-1111		DATE
SHEET 1 OF 1			fax 316-776-9035		CHECKED
					DATE

A B C D E F G H J K L M N P